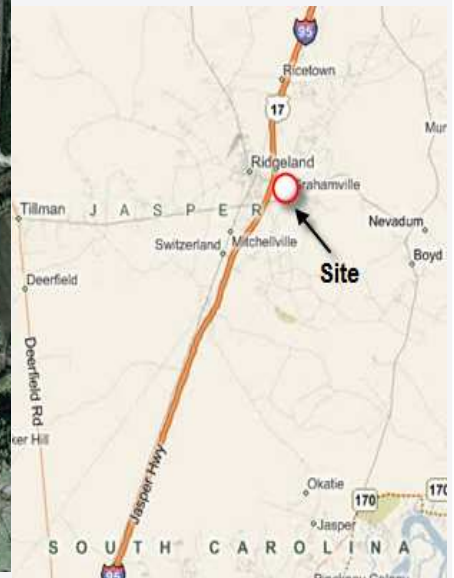
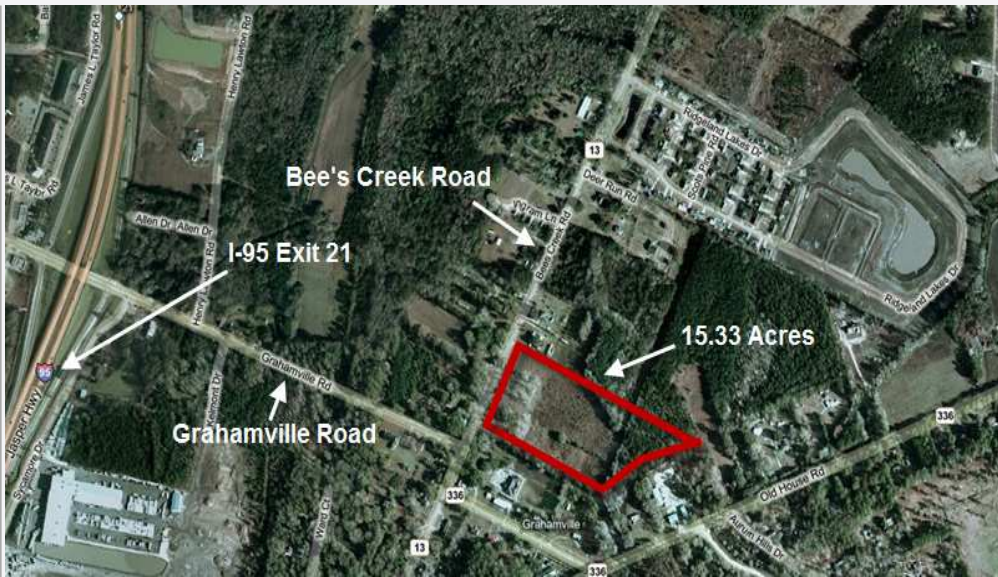


Bank-Owned

\$149,900

15.33 Acres

On Bee's Creek Road, Ridgeland, SC



- PARCEL:** 15.33 Acres / 15.18 Upland
- ZONING:** Neighborhood General (T-3)
- ACCESS:** Bee's Creek Road, Ridgeland, SC
- LOCATION:** Approx. 200' North of Grahamville Road / 2,200' from I-95, Exit 21
- USES:** Residential Development or Mixed-Use. Priced for Single Home, Family Compound, or Future Development.
- UTILITIES:** City of Ridgeland Water Adjacent to Property on Bee's Creek Road. City Sewer Planned for Bee's Creek Road (Based on Future Development of Nearby Property).
- WETLANDS:** Delineation of .15 Acres (Ditch) Certified by US Army Corp of Engineers – Valid to November, 2013.

NOTABLE FEATURES:

- Bank-Owned: Priced to Sell (\$9,778/Acre)
- Formerly "The Grove" Development – Originally Intended for 73-Lot Subdivision (Preliminary Materials Available)
- City of Ridgeland Water Available / Sewer Installation Planned (Access Coming Soon to Nearby Development)
- Wetlands Delineated

For more information and inspection please contact:

BILL LATTIMORE, JR.

Managing Director
(912) 236-8992 (o)
(912) 220-1433 (c)
blattimore@glcre.com

WILLIAM LATTIMORE, III

(912) 236-8992 (o)
(912) 596-7019 (c)
wlattimore@glcre.com

A full commission computed and earned in accordance with the rates and conditions of our agency agreement with our principal, when received from our principal, will be paid to a cooperating broker who consummates a sublease which is unconditionally executed and delivered by and between sublandlord and subtenant. (A copy of the rates and conditions referred to above are available upon request.)

No warranty or representation, express or implied, is made as to the accuracy of the information contained herein, and same is submitted subject to errors omissions, change of price, rental or other conditions, withdrawal without notice, and to any specific listing conditions, imposed by our principals.

GILBERT & LATTIMORE
Commercial Real Estate, LLC

An independently owned and operated member of the
CUSHMAN & WAKEFIELD
ALLIANCE