

For Sale

**OFFICE AND  
SHOP/WAREHOUSE**

# Tremont Road Office and Shop/Warehouse

1,055 SF Office Building and 1,608 SF Shop on .63 Acres



**PARCEL SIZE:** .63± Acres

**BUILDING SIZE:**

Office: 1,055 Square Feet

Shop: 1,608 Square Feet

**LIST PRICE:** \$200,000

**ZONING:** I-L

**FRONTAGE:** 225 LF on Tremont Road

**ACCESS:** Excellent from I-516 and  
Highway 17 via Tremont Road

**FEATURES:**

- Central location in Chatham County with immediate access to I-516
- Excellent for service oriented Businesses with need for office and shop space with storage yard and fenced parking area
- Efficient office layout with 3 private offices, reception area, two restrooms and large filing and work room
- Seller will provide Phase I ESA and Boundary Survey prior to Closing



For more information please contact:

**HARVEY J. GILBERT**

Managing Director and Broker-in-Charge

(912) 236-8992

[hgilbert@glcre.com](mailto:hgilbert@glcre.com)

**STEPHEN D. EZELLE, CCIM**

Senior Associate

(912) 236-8992

[sezelle@glcre.com](mailto:sezelle@glcre.com)

No warranty or representation, express or implied, is made as to the accuracy of the information contained herein, and same is submitted subject to errors omissions, change of price, rental or other conditions, withdrawal without notice, and to any specific listing conditions, imposed by our principals.

**GILBERT & LATTIMORE**  
Commercial Real Estate, LLC

An independently owned and  
operated member of the  
**CUSHMAN &  
WAKEFIELD**  
ALLIANCE

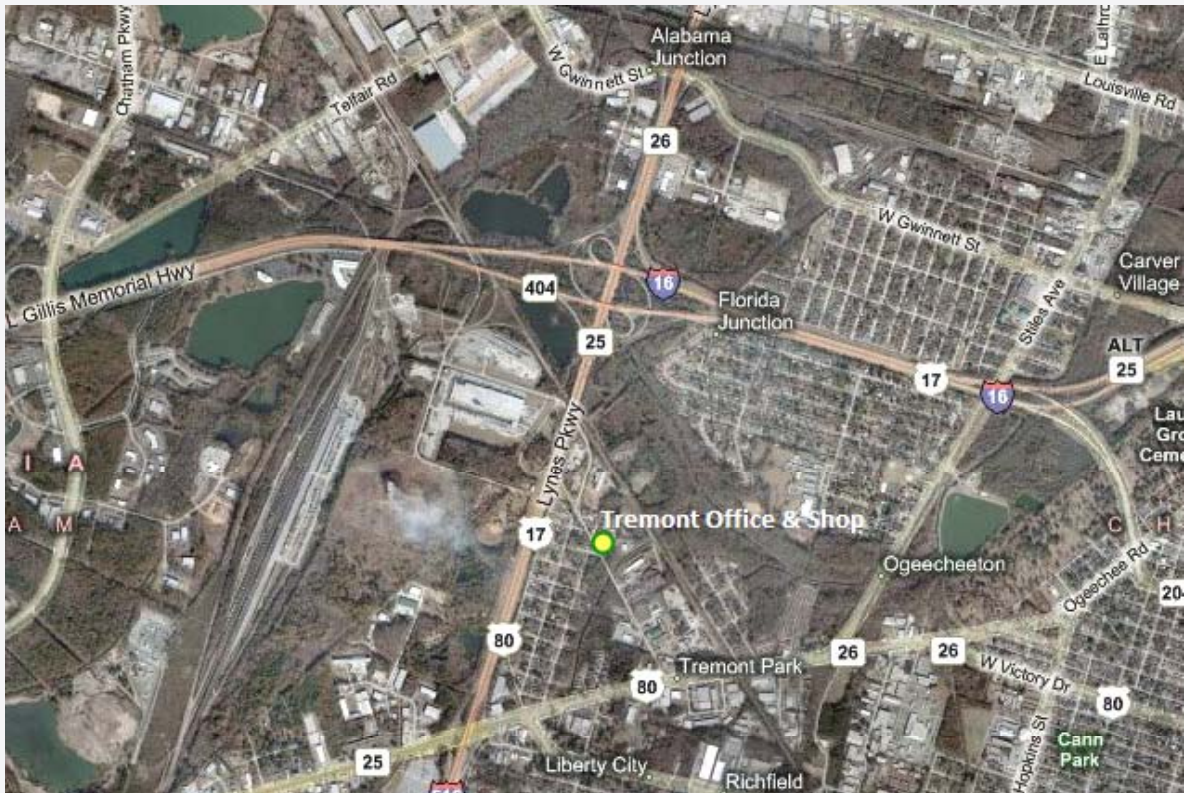
For Sale

OFFICE AND  
SHOP/WAREHOUSE

# Tremont Road Office and Shop/Warehouse

1,055 SF Office Building and 1,608 SF Shop on .63 Acres

## AREA LOCATION MAP:



## PHOTOS:



1,055 Square Foot Office



1,608 Square Foot Shop/Warehouse and Fenced Area

For more information please contact:

### **HARVEY J. GILBERT**

Managing Director and Broker-in-Charge  
(912) 236-8992  
[hgilbert@gicre.com](mailto:hgilbert@gicre.com)

### **STEPHEN D. EZELLE, CCIM**

Senior Associate  
(912) 236-8992  
[sezelle@gicre.com](mailto:sezelle@gicre.com)

No warranty or representation, express or implied, is made as to the accuracy of the information contained herein, and same is submitted subject to errors omissions, change of price, rental or other conditions, withdrawal without notice, and to any specific listing conditions, imposed by our principals.

**GILBERT & LATTIMORE**  
Commercial Real Estate, LLC

An independently owned and  
operated member of the  
**CUSHMAN & WAKEFIELD**  
ALLIANCE